

STERI-HOLD™

A first defence in infection control.

A comprehensive range of ironmongery
with the antimicrobial performance of copper
and the durability of stainless steel.

Kills 99.9% of pathogens in minutes.

STERI-HOLD™

Steri-Hold is a range of solid copper alloy architectural hardware manufactured in the UK. The antimicrobial performance copper alloy continuously kills 99.9% harmful bacteria, whilst maintaining the clinical aesthetic of stainless steel.

Copper is the first and only elemental solid surface material registered with the U.S. Environmental Protection Agency to actively kill bacteria. The antibacterial properties work 24/7, never washing out or wearing away, making **Steri-Hold**™ ideally suited for commonly touched surfaces where bacterial transfer is a concern. **Steri-Hold**™ is manufactured using a 70-30 copper-nickel alloy, which makes the range tarnish-resistant and will not oxidize and patinate like pure copper. **Steri-Hold**™ products have the appearance of a satin / brushed stainless steel product.

Cleaner than Stainless Steel, Safer for Everybody.

When specifying items from this range we will provide a full and comprehensive ironmongery specification, including required hinges, locks and all other ironmongery items required.

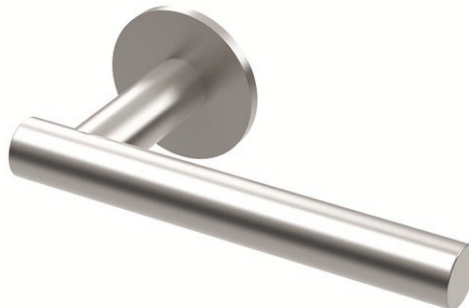
01246 572277 | ironmongery@datim.co.uk

datim.co.uk

Solid Straight Levers 130x19mm



Solid T-Bar Levers 145x19mm



Order Code	Description / Size
202001.SHSF	Solid straight levers on 52 x 4mm unsprung ball bearing rose Bolt through fixings c/w spindles

Order Code	Description / Size
202002.SHSF	Solid T-Bar levers on 52 x 4mm unsprung ball bearing rose Bolt through fixings c/w spindles

Solid Safety Levers 135x19mm



Solid Safety Levers 130x19mm



Order Code	Description / Size
202003.SHSF	Solid safety levers on 52 x 4mm unsprung ball bearing rose Bolt through fixings c/w spindles

Order Code	Description / Size
202004.SHSF	Solid safety levers on 52 x 4mm unsprung ball bearing rose Bolt through fixings c/w spindles

T-Bar D Section Levers 135x25x12mm



Oval Section T-Bar Levers 145x28x16mm



Order Code	Description / Size
202005.SHSF	T-Bar D section levers on 52 x 4mm unsprung ball bearing rose Bolt through fixings c/w spindles

Order Code	Description / Size
202006.SHSF	Oval section T-Bar levers on 52 x 4mm unsprung ball bearing rose Bolt through fixings c/w spindles

Pull Handle



- Bolt through fixings
- 19mm dia

Order Code	Size
202007.SHSF	300mm
202008.SHSF	400mm
202009.SHSF	600mm
202010.SHSF	900mm

Pull Handle on Pillars



- Bolt through fixings
- 19mm dia

Order Code	Size
202011.SHSF	300mm
202012.SHSF	400mm
202013.SHSF	600mm
202014.SHSF	900mm

D Section Pull Handle on Pillars



- Bolt through fixings
- 25x11mm dia

Order Code	Size
202015.SHSF	300mm
202016.SHSF	400mm
202017.SHSF	600mm
202018.SHSF	900mm

Oval T-Bar Pull Handle on Pillars



- Bolt through fixings
- 28x16mm dia

Order Code	Size
202019.SHSF	300mm
202020.SHSF	400mm
202021.SHSF	600mm
202022.SHSF	900mm

Peanut Thumbturn and Emergency Release with Indicator



Order Code	Description / Size
202028.SHSF	Peanut thumbturn and emergency release with Indicator (5mm square spindle)

Disabled Peanut Thumbturn and Emergency Release with Indicator



Order Code	Description / Size
202029.SHSF	Disabled Peanut thumbturn and emergency release with Indicator (5mm square spindle)

Coat Hook with Groove 35x16mm



Order Code	Description / Size
202030.SHSF	35mm projection x 16mm Coat hook with groove Concealed fixing

Keyhole Profile Cylinder Escutcheons 52 x 4mm



Order Code	Description / Size
202023.SHSF	52 x 4mm Keyhole profile cylinder Escutcheons concealed fixing

Radius Euro Profile Cylinder Pull 75x50mm



Order Code	Description / Size
202024.SHSF	52 x 4mm Euro profile cylinder Escutcheons concealed fixing

Radius Euro Profile Cylinder Pull 75x50mm



Order Code	Description / Size
202025.SHSF	75mm x 50mm Radius euro profile cylinder pull

Finger Plates



Order Code	Size
202026.SHSF	450 x 75 x 1mm
202027.SHSF	650 x 75 x 1mm

Surface Overhead Fully Adjustable 2-5 Door Closer DDA



Opening Angle
180°



Max Door Width
EN2-5 up to 1250mm



Adjustable
Closing Speed



Adjustable
Delayed Action



Min Door
835mm fig1
728mm fig66



3250.205
CPR01.07.13



Adjustable
Back Check



Fire Tested
up to 120 mins



Max Door Weight
EN2-5 up to 110kg



Adjustable
Latch Speed



Universal
Application



Power Size
EN2-5



Guarantee



Order Code	Description
3250.205.SNP	Power Size 2-5

Fully Adjustable Cam Action Slide Arm Surface Door Closer



Min Door
857mm fig30



Fire Tested
up to 60 mins



Max Door Weight
EN2-4: 80kg
EN2-5: 110kg



Opening Angle
110°



Max Door Width
EN2-4: 1100mm
EN2-5: 1250mm



Adjustable
Closing Speed



Adjustable
Delayed Action



Universal
Application



Power Size
EN2-4 or
EN2-5



Adjustable
Latch Speed



Guarantee



3450.204CPR01.07.13



Rut Lock

Order Code	Description
3450.204.SNP	Power Size 2-4
3450.205.SNP	Power Size 2-5

Concealed Slide Arm Closer



Min Door
835mm



Min Door
Thickness 44mm



Fire Tested
EN1634



Max Door Weight
up to 80kg



Opening Angle
110°



Max Door Width
550-1100mm



Adjustable
Closing Speed



IFCC 1438



Universal
Application



Power Size
EN2-4



Adjustable
Latch Speed



Adjustable
Back Check



Guarantee



3490FR.3.SE
CPR71118

Order Code	Description
3490FR.3.SNP	Power Size 2-4



“Getting your Ironmongery Specified and Delivered to Site FAST!”

01246 572277
ironmongery@datim.co.uk

Datim Limited Foxwood Industrial Park,
Foxwood Road, Chesterfield, S41 9RN

DATIM

Architectural Ironmongery

www.datim.co.uk